



# VINGTOR

## BATTERYLESS TELEPHONE SYSTEMS



**VINGTOR**

VINGTOR is world renowned for its extensive knowledge in the design, construction, installation and maintenance of integrated marine communication systems. The company, with long-term experience serving the maritime industry, has an impressive portfolio and provides cutting edge solutions to vessels worldwide under the internationally renowned brand name of VINGTOR®. The VINGTOR brand underpin Zenitel Marine's reputation as a supplier of the most flexible, reliable and advanced communication systems available today.

#### MEETING YOUR REGULATORY REQUIREMENTS

All Zenitel Marine products are tested according to IEC 60945, IEC 60533 standards, and comply with SOLAS regulations and codes relevant for on-board communication systems. Zenitel Marine delivers systems in accordance with the rules of all major classification societies.

#### FOR ALL YOUR SALES & AFTER SERVICE REQUIREMENTS

Zenitel Marine is a specialist provider of spare parts, repairs, maintenance contracts and refit solutions. Responsibility and availability are our guidelines and customer support and service a first priority.

<b>VSP BATTERYLESS TELEPHONE SYSTEMS</b>	<b>4</b>
VSP DESCRIPTION	4
VSP SYSTEM BLOCK	5
TELEPHONE SYSTEM 12-WAY	6
TELEPHONE SYSTEM 20-WAY	7
COMMON ACCESSORIES	8
<b>VSP INTRINSICALLY SAFE SET</b>	<b>10</b>
VSP INTRINSICALLY SAFE SET DESCRIPTION & SYSTEM BLOCK	10
VSP EX UNITS	11

# BATTERYLESS TELEPHONE SYSTEMS

The VSP system is independent of the vessel's power supply and fulfils the demands for emergency communication between vital positions on board. The system has a versatile range of light but robust and corrosion-resistant stations for all on-board environments. The various VSP stations can be delivered for panel, desktop or bulkhead mounting.

## THE SYSTEMS

- 12-Way system consisting of up to 12 main stations with selector switch for selective calling between all connected stations
- 20-Way (M) system: By inserting an additional group selector in each station, the system can be expanded up to 20 extensions
- Intrinsically safe VSP set for units in hazardous areas (12-Way only)

## FEATURES

- Provides emergency communication independent of the vessel's power supply
- Excellent speech quality
- Noise compensated microphones
- Built-in or separate relay for operation of signal units
- Provides output for 24 VDC to external equipment
- Supports headset directly connected to stations or via plug box
- Supports a wide range of stations for ship environment

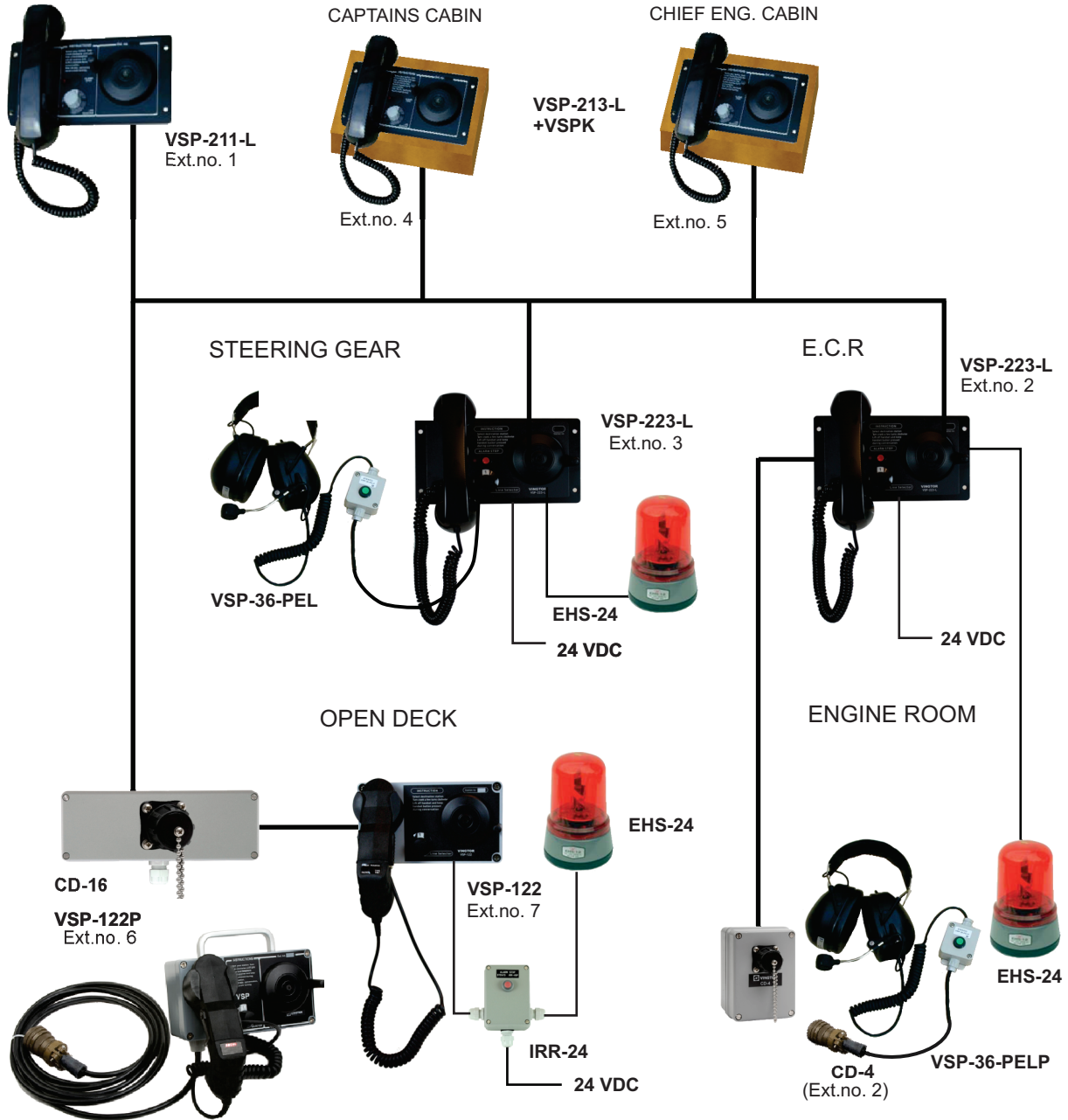
## APPROVALS

- The system is tested according to IEC60945, and is type approved by DNV, Rina, RMRS, RRR, LR, CCS, ABS.



WHEELHOUSE

ACCOMMODATION



## TELEPHONE SYSTEM 12-WAY



1020600931

### VSP-211-L MAIN STATION, PANEL MOUNTED

- Delivered with 12 positions selector switch
- Equipped with the built-in system amplifier w/ capacitor battery
- Terminals for auxiliary 24V DC when used as Common Battery Telephones
- Bulkhead mounted by use of corresponding on-wall metal box, type MBOKS
- Suitable for installation in wheelhouse and control room



**Size (WxHxD):** 238 x 214 x 137 mm (w/handset and built-in depth) **Weight:** 1.3 kg

Additional Information: IP-44, To avoid noise problems, the 24 VDC must be supplied via a DC/DC converter

1020600943

### VSP-223-L MAIN STATION, PANEL MOUNTED W/BUILT-IN RELAY CIRCUIT - 24V DC

- Delivered with 12 positions selector switch
- Alarm stop button
- Noise compensated microphone
- Optical LED call indication at front (in addition to audible call signal)
- Bulkhead mounted by use of corresponding on-wall metal box, type MBOKS
- Suitable for installation in control rooms and noisy areas like steering gear, engine- and thruster rooms



**Size (WxHxD):** 238 x 214 x 137 mm (w/handset) **Weight:** 1.3 kg

Additional Information: IP-44

1020600935

### VSP-213-L MAIN STATION, PANEL MOUNTED, INDOOR UNIT

- Delivered with 12 position selector switch
- Desk or wall mounted by use of a corresponding wooden cabinet, type VSPK
- Wall mounted by use of a corresponding on-wall metal box, type MBOKS
- Suitable for installation in wheelhouse, control room or accommodations



**Size (WxHxD):** 238 x 214 x 137 mm (w/handset and built-in depth) **Weight:** 1.3 kg

Additional Information: IP-44

1020600910

### VSP-122 MAIN STATION, WATERTIGHT

- Wall mounting
- 12 extensions selector
- Has watertight housing
- For use in bridge wings and open deck areas.



**Size (WxHxD):** 220 x 220 x 185 mm (w/handset) **Weight:** 2 kg

Additional Information: IP-66

3006200024

### VSP-122P MAIN STATION, PORTABLE WATERTIGHT

- Portable substation
- 12 extensions selector
- Waterproof housing
- Carry handle and 5 meter cable with 16 pins Amphenol plug
- Used together with CD-16 in bridge wings and open deck areas.



**Size (WxHxD):** 220 x 220 x 185 mm (w/handset) **Weight:** 2.6 kg

Additional Information: IP-66

## TELEPHONE SYSTEM 20-WAY



3006200030

### VSP-22M MAIN STATION, WT

- For bulkhead mounting
- Watertight housing for use in bridge wings and open deck areas



Size (WxHxD): 220 x 222 x 185 mm (w/handset)  
Weight: 2.4 kg

Additional Information: IP-66

3006200025

### VSP-211M-L MAIN STATION, PANEL MOUNTED, W/H UNIT

- Equipped with a built-in system amplifier with capacitor battery
- Terminals for auxiliary 24 VDC when used as Common battery Telephones
- Optical LED call indication in front
- Delivered for flush or bulkhead mounting by use of an on-wall metal or wooden box
- Suitable for installation in wheelhouse and control rooms



Size (WxHxD): 238 x 214 x 137 mm (w/handset and built-in depth) Weight: 1.3 kg

Additional Information: IP-44, To avoid noise problems, the 24 VDC must be supplied via a DC/DC converter

3006200029

### VSP-213M-L MAIN STATION, PANEL MOUNTED, INDOOR

- Optical LED call indication at front
- Delivered for flush- or bulkhead mounting by use of an on-wall metal or wooden box
- Desk or wall mounted by use of the wooden cabinet, type VSPK
- Wall mounted by use of a corresponding on-wall metal box, type MBOKS
- Suitable for installation in accommodations and control rooms



Size (WxHxD): 238 x 214 x 137 mm (w/handset and built-in depth) Weight: 1.3 kg

Additional Information: IP-44

3006200028

### VSP-212M-L MAIN STATION, PANEL MOUNTED W/BUILT-IN RELAY CIRCUIT - 24V

- Equipped with built-in relay latch timer for activation of external visible or audible 24V DC signal units
- Alarm stop button
- Noise compensated microphone



Size (WxHxD): 238 x 214 x 137 mm (w/handset and built-in depth) Weight: 1.3 kg

Additional Information: IP-44

## MANUALS

A100K10873

VSP 12-Way Technical Manual

A100K10675

VSP 12-Way User Guide

A100K10758

VSP-M 20-Way Technical Manual

A100K10756

VSP-M 20-Way User Guide



## ACCESSORIES



**Note!**  
See Catalog Common  
Equipment for signal units

1020159000

### CD-4 PLUG-BOX WT

- For portable unit in VSP
- Wall mounting



Size (WxHxD): 80 x 110 x 63 mm Weight: 0.35 kg

Additional Information: IP-66

1020600982

### CD-16 PLUG-BOX FOR VSP-122P

- Designed to be used together with VSP-122P, portable stations with station selector switch
- Socket with dust cap
- Delivered for bulkhead mounting
- Suitable for installation in noisy or deck areas



Size (WxHxD): 224 x 80 x 63 mm Weight: 0.6 kg

Additional Information: IP-66

3006090478

### MBOKS METAL BOX F/WALL MOUNTING

- On-wall box designed for stations in VSP



Size (WxHxD): 244 x 138 x 76 mm Weight: 1 kg

3006200049

### VSPK WOODEN CABINET WHEN DESK MOUNTED

- Wooden box designed for desk or on-wall mounting of accommodation stations
- For all indoor stations



Size (WxHxD): 260 x 162 x 98 mm Weight: 0.55 kg

1020600751

### VSP-36-PEL HEADSET WITH BOOM MICROPHONE WITH 10M CABLE

- Headset for connecting directly to a VSP station
- ON/OFF switch-box with belt clip
- Standard with 10 m cable
- To be used in noisy areas



Weight: 1.1 kg

Additional Information: IP-54



1020600761

### VSP-36-PELP PORTABLE HEADSET WITH BOOM MICROPHONE WITH 10M CABLE AND PLUG

- ON / OFF switch box with belt clip
- Standard with 10 m cable and 4 pin Amphenol plug
- To be used together with CD-4 in noisy areas



Weight: 1.2 kg

Additional Information: IP-54

3006090486

### MT9 THROAT MICROPHONE FOR VSP-36-PEL/PELP

- Bone construction, vibration sensitive
- Impedance: 3900 Ohm @ 1kHz
- Cable: PUR, flame retardant, black ø3.0mm



Weight: 0.04kg

Additional Information: Replace boom microphone on VSP-36 headset

3006202045

### IRR-24 RELAY BOX FOR 24V DC SIGNAL UNITS WT

- Built-in timer circuit. 20 sec. signalling time as standard
- Alarm stop button
- Delivered for bulkhead mounting
- Suitable for installation in noisy areas



Size (WxHxD): 80 x 110 x 63 mm Weight: 0.35 kg

Additional Information: IP-66

3006200005

### IRR-VSPM-24 RELAY BOX F/ALARM 24V DC SIGNAL UNIT, WT

- Separate relay timer unit for operation of 24V DC visible and/or audible signal units
- Built-in timer circuit. Signalling time is 20 sec. as standard
- Alarm stop button
- Delivered for bulkhead mounting
- Suitable for installation in noisy areas



Size (WxHxD): 224 x 80 x 63 mm Weight: 0.6 kg

Additional Information: IP-66

1020600995

### IRR-VSP-220 RELAY BOX F/ALARM 220V AC, WT

- Separate relay timer unit for operation of 220V AC visible and/or audible signal units
- Built-in timer circuit. Signalling time is 20 sec. as standard
- Alarm stop button
- Delivered for bulkhead mounting
- Suitable for installation in noisy areas



Size (WxHxD): 224 x 80 x 63 mm Weight: 0.6 kg

Additional Information: IP-66

3006200004

### IRR-VSPM-220 RELAY BOX F/ALARM 220V AC SIGNAL

- Separate relay timer unit for operation of 220V AC visible and / or audible signal units
- Built-in timer circuit. Signaling time is 20 sec. as standard
- Alarm stop button
- Delivered for bulkhead mounting
- Suitable for installation in noisy areas
- For VSPM system



Size (WxHxD): 224 x 80 x 63 mm Weight: 0.6 kg

Additional Information: IP-66

# INTRINSICALLY SAFE SET FOR EX II G AREA

An Intrinsically Safe VSP Set consists of a Buffer unit mounted in a safe area and a Main station, with optional headset and call signal, mounted in the hazardous area. The Buffer unit can be delivered in different versions, depending on how many main stations should be called. The buffer unit must be powered by 24V DC.

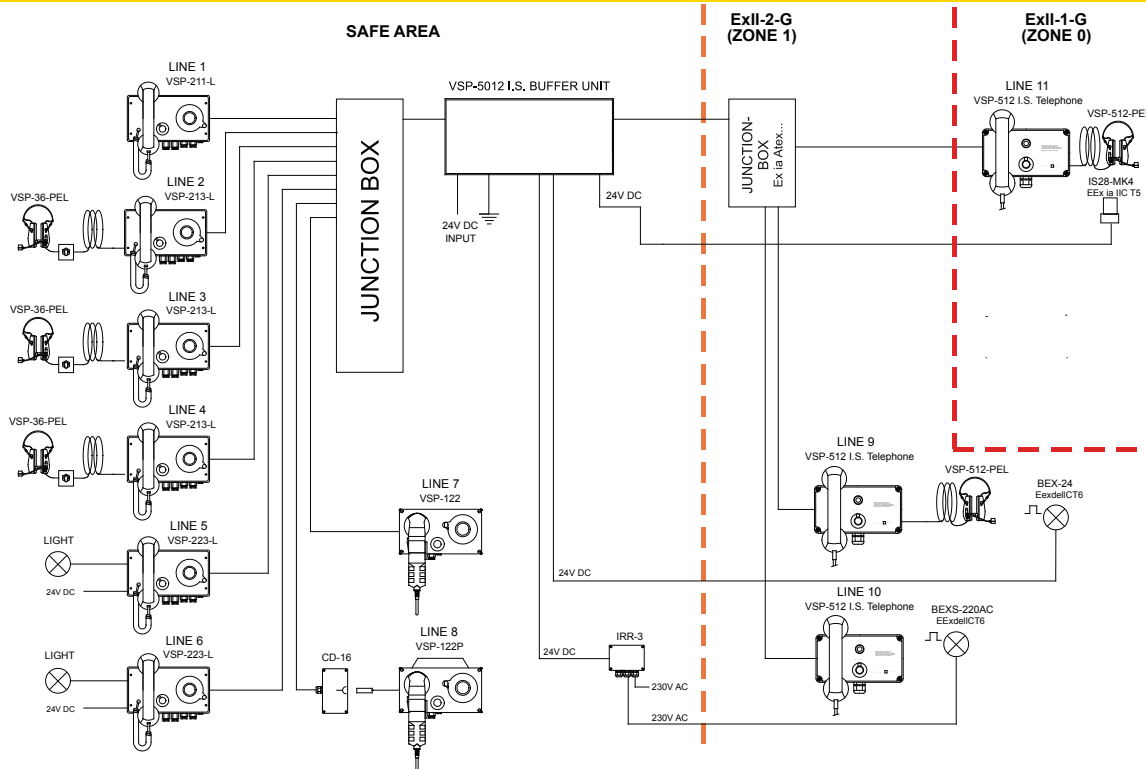
Making a call from a Main station in the hazardous area to VSP stations in the safe area is simple: Turn the selector switch to the desired extension number and press the call button. Lift the handset and keep the handset button pressed during the conversation.

## FEATURES

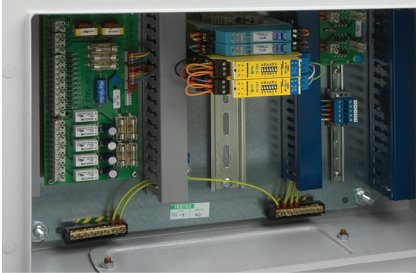
- For use in hazardous areas
- ATEX approved
- Excellent speech quality
- Easy to use
- Support up to 12 Main stations in Ex II G 1 area
- 4 x 24V DC outputs to Ex signal units.
- Additional 24V DC outputs to Ex signal units on request
- 4-12 call signal outputs to safe area depending on buffer version
- Require 24V DC to operate
- Optional headset connected directly to main station
- Compatible with VSP 12-way system

## CERTIFICATE

- EC-Type Examination Certificate  
Number Nemko 05ATEX1059



## VSP EX UNITS



3006200037

### VSP-5004 EX BUFFER UNIT IN SAFE AREA, SELECTIVE CALL TO 4 STATIONS

- 4 call signal outputs to safe and EX area
- Signal output for 4 stations in hazardous area
- Metal cabinet RAL7032
- Wall mounting

Size (WxHxD): 450 x 300 x 200 mm Weight: 11 kg

Additional information: IP-44

3006200038

### VSP-5004/1 EX BUFFER UNIT IN SAFE AREA, SELECTIVE CALL TO 4 STATIONS W/1PC ZENER BARRIER

- 4 call signal outputs to safe and EX area
- Delivered with 1x zener barrier for 24 VDC sounder IS28-MK4 in zone 0
- Signal output for 1 station in hazardous area
- Metal cabinet RAL7032
- Wall mounting

Size (WxHxD): 450 x 300 x 200 mm Weight: 11 kg

Additional information: IP-44

3006200039

### VSP-5004/2 EX BUFFER UNIT IN SAFE AREA, SELECTIVE CALL TO 4 STATIONS W/2PC ZENER BARRIER

- 4 call signal outputs to safe and EX area
- Delivered with 2 x zener barriers for 24 VDC sounder IS28-MK4 in zone 0
- Signal output for 2 stations in hazardous area
- Metal cabinet RAL7032
- Wall mounting

Size (WxHxD): 450 x 300 x 200 mm Weight: 11 kg

Additional information: IP-44

3006200040

### VSP-5008 EX BUFFER UNIT IN SAFE AREA, SELECTIVE CALLING TO 8 STATIONS

- 8 call signal outputs to safe and EX area
- Signal output for 4 stations in hazardous area
- Metal cabinet RAL7032
- Wall mounting

Size (WxHxD): 450 x 300 x 200 mm Weight: 11 kg

Additional information: IP-44

3006200042

### VSP-5012 EX BUFFER UNIT IN SAFE AREA, SELECTIVE CALLING TO 12 STATIONS

- 12 call signal outputs to safe and EX area
- Signal output for 4 stations in hazardous area
- Metal cabinet RAL7032
- Wall mounting

Size (WxHxD): 450 x 300 x 200 mm Weight: 11 kg

Additional information: IP-44

3006200044

### VSP-512 INTRINSICALLY SAFE MAIN STATION

- Suitable for mounting in hazardous areas Ex II 1G (Zone 0)
- Delivered with a 12 position selector switch and a call button
- Used together with buffer unit mounted in safe area
- Delivered for bulk-head mounting



Size (WxHxD): 220 x 208 x 170 mm Weight: 1.8 kg

Additional Information: IP-66

3006200046

### VSP-512-PEL MT7H79F-501-FL5255 HEADSET I/S W/BOOM MI ON-OFF 10M CORD

- ON/OFF switch box w/ belt clip
- Standard with 10 m cable
- To be used in noisy areas



Weight: 0,5 kg

Additional Information: IP-54

3006200045

### VSP-512-EXT FL3X -10 M EXTENSION CABLE FOR VSP-512-PEL

- Fixed with 4 pin Female plug
- Package include 4 pin Male extension plug for connection to VSP-512



Weight: 0.32 kg

## MANUAL

A100K10872

VSP-EX Technical Manual v.2.0

## **VINGTOR PRODUCT CATALOGS**

<b>BATTERYLESS TELEPHONE SYSTEMS</b>	<b>A100K11295</b>
<b>TALK BACK &amp; INTERCOM SYSTEM SYSTEMS</b>	<b>A100K11296</b>
<b>SPA-V2 PUBLIC ADDRESS SYSTEM</b>	<b>A100K11298</b>
<b>ACM FAMILY &amp; PULSE SYSTEMS</b>	<b>A100K11297</b>
<b>WIRELESS SOLUTIONS</b>	<b>A100K11299</b>
<b>RADIO SOLUTIONS</b>	<b>A100K11318</b>
<b>MASTER CLOCK, SOUND RECEPTION, HOSPITAL &amp; REFRIGERATOR SYSTEMS</b>	<b>A100K11300</b>
<b>ENTERTAINMENT SYSTEMS</b>	<b>A100K11302</b>
<b>CCTV SYSTEMS</b>	<b>A100K11303</b>
<b>COMMON EQUIPMENT</b>	<b>A100K11301</b>